



Zurn One Manual Wall Hung Toilet System with 1.28 GPF EcoVantage® Flush Valve Z.WC2.M

TAG _____

ARCHITECTURAL & ENGINEERING SPECIFICATION

Complete EcoVantage® high efficiency 1.28 gpf manual actuated wall mounted commercial water closet system with Z6000AV-HET exposed, manually activated chrome-plated closet diaphragm flushometer for either left or right hand supply, Z5955SS-EL open front commercial toilet seat, Z5615-BWL wall mounted vitreous china water closet with Z5977-NEO NeoSeal outlet sealing gasket assembly kit and Z5610-NUT-EXT-KIT manufactured by Zurn.

PRODUCT FEATURES

- 1.28 gpf (gallons per flush)
- Wall mounted elongated front rim top spud toilet
- High efficiency siphon jet flush action
- 2-1/8" fully glazed trapway
- Large water spot - 12' x 10'
- Vitreous china wall bowl construction
- Static weight load of 1000 lb*
*Not intended for bariatric use
- Diaphragm- type flushometer complete with Zurn's Go Blue® TPE, chloramine resistant, dual seal diaphragm with a clog resistant filtered bypass
- ADA compliant, non-hold open, dual seal handle
- High pressure vacuum breaker
- Adjustable tailpiece
- Control stop with internal siphon guard protection, vandal resistant cap, sweat solder kit and cast wall flange with set screw
- Open front, elongated, white commercial toilet seat with SS check hinges
- NeoSeal® outlet gasket assembly
- 20% water savings over standard 1.6 gpf system

COMPLIANCE AND CERTIFICATION:

Meets the American Disabilities Guidelines and ANSI A117.1 requirements when installed according to these requirements.

- Fixture - Complies with ASME A112.19.2 / CSA B45.1
- Flush Valve - Complies with ASSE 1037 / ASME A112.1037 / CSA B125.37



This product should be used with a WaterSense labeled counterpart with a compatible flow volume to ensure that the entire system meets the requirements for water efficiency and performance.



ZURN ONE SYSTEM PACKOUT INCLUDES:

FIXTURE - Z5615-BWL:

Vitreous China, 1.1 gpf [4.2 Lpf] or greater high efficiency wall hung toilet with siphon jet flushing action and elongated front rim with 1-1/2" [38mm] top spud

FLUSH VALVE - Z6000AV-HET:

Exposed, quiet diaphragm-type, chrome-plated flushometer valve with a polished exterior. Complete with Zurn's AquaVantage® TPE, chloramine resistant, dual seal diaphragm with a clog resistant, filtered bypass. The valve is ADA compliant with a non-hold open and no leak handle feature. Internal seals are made of chloramine resistant materials

Z5955SS-EL:

Elongated, open front white toilet seat with stainless steel check hinges

Z5610-NUT-EXT-KIT:

Retrofit nut kit for extending carrier studs from existing wall

Z5977-NEO:

NeoSeal® gasket kit for wall mounted bowls

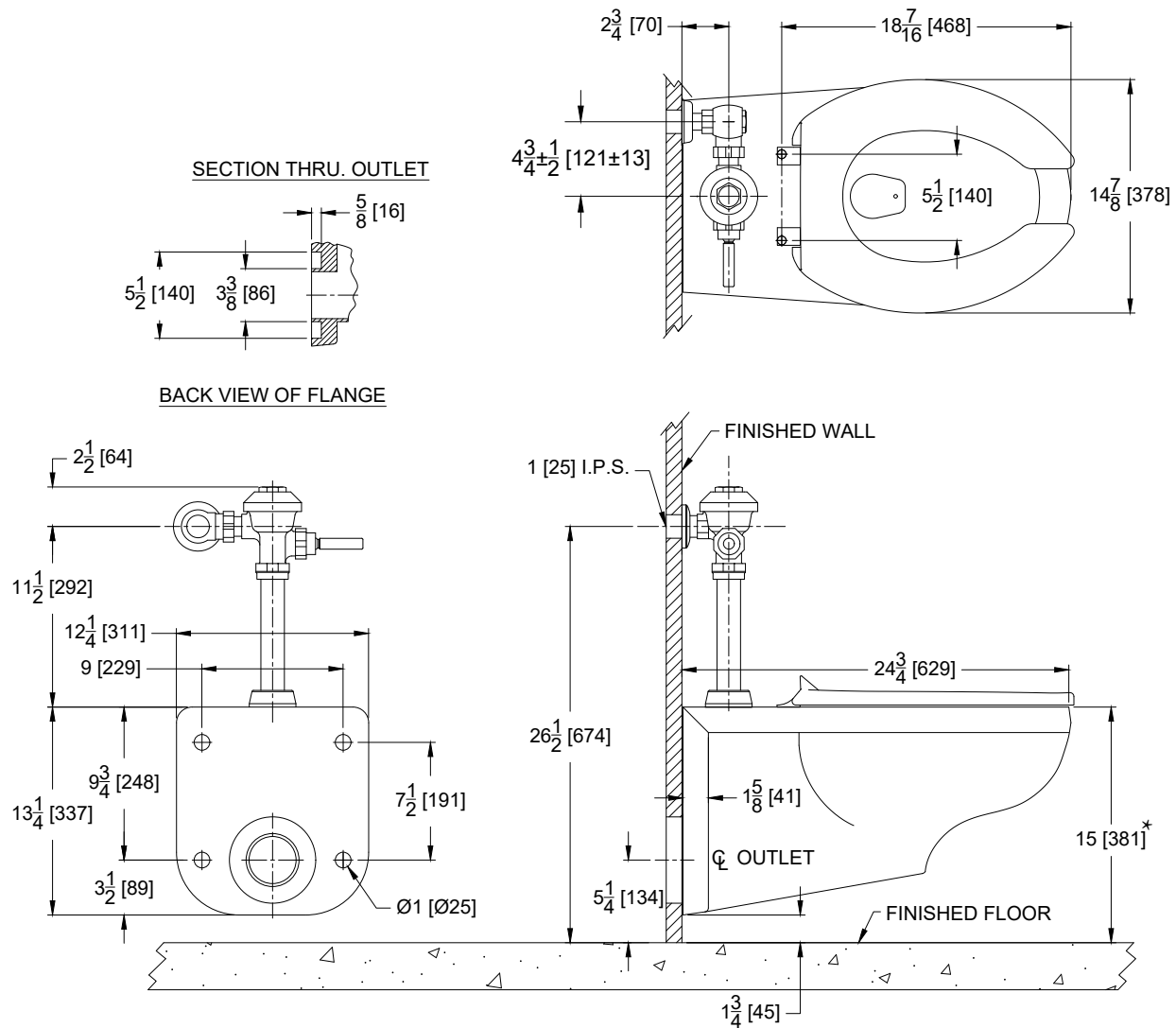
RECOMMENDED CARRIER:

Z1201 or Z1202 EZCarry™ 500 lbs load rated High Efficiency Carrier

ARCHITECTURAL & ENGINEERING APPROVAL

The information contained in this document is subject to change without notice.
Please contact Zurn for most up to date information.

Rough-in / Overview dimensions



*NOTE: For ADA compliance, top of seat height should be installed at 17" [431mm] -19" [482mm] from finished floor.



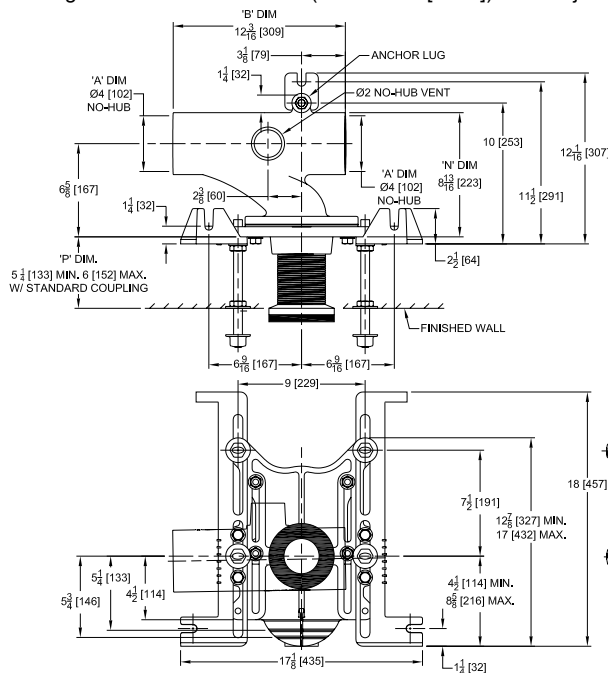
Z1201-N_4

EZCARRY® ADJUSTABLE HORIZONTAL HIGH PERFORMANCE
SIPHON JET NO-HUB WATER CLOSET CARRIER SYSTEM

SPECIFICATION SHEET

TAG _____

Design and Dimensional Data (inches and [mm]) are Subject to Manufacturing Tolerances and Change Without Notice



Product Number	Approx. Wt lbs [kg]
Z1201-NL4	58 [26]
Z1201-NR4	

Note:

1. Z coupling, Min. 'P' Dim Obtainable=2 [51]. EZ-Set™ Coupling, Min. 'P' Dim. Obtainable=4-1/4 [108] or 2-1/16 [52] for 12 [305] NPT.
2. Feet bolted to floor using min. 1/2 [13] dia. anchors.
3. Rear anchor foot required for secure installation.

Z1201-NR4 Illustrated

ENGINEERING SPECIFICATION: ZURN Z1201-N_4

EZCarry® horizontal siphon jet water closet carrier system with high performance waterway and 4" [102mm] no-hub connections. System includes Dura-Coated cast iron main fitting with hydro-mechanically optimized sweep and extended 2" [51mm] vent, adjustable faceplate, QuickFit™ faceplate gasket, floor mounted pre-fab slotted foot supports with top anchoring pre-fab support base, heavy-duty 1/2" [13mm] rear anchor tie down, fixture bolts, trim, stud protectors, bonded "Neo-Seal" gasket, and corrosion resistant, adjustable 3" [76mm] dia. X 6" [152mm] coupling with integral test cap designed to increase flow velocity and line carry. EZCarry® system complies with the requirements of ASME A112.6.1M up to a 500 lbs [227 kg] static load rating.

OPTIONS (Check/specify appropriate options)

- ___ Z1201-NL4 4 [102] No-Hub Left Hand Inlet with Flow to Right
___ Z1201-NR4 4 [102] No-Hub Right Hand Inlet with Flow to Left

PREFIXES

- ___ Z D.C.C.I. System with Zurn ZZ Adjustable Coupling*
___ ZQ D.C.C.I. System with NPT Faceplate, Non-Adjustable Coupling

SUFFIXES

- | | |
|---|---|
| ___ -A Auxiliary Support Assembly (For 'P' Dim. Greater than 18 [457]) | ___ -G Galvanized Cast Iron |
| ___ -CC Corrosion Resistant Cast Iron Coupling (2-1/4 [57] to 12 [305]) | ___ -JC 2 [51] Auxiliary Inlet with 1/8 Bend |
| ___ -CE EZ-Set™ Coupling (NPSM 6 [152], 12 [305] or custom) (NPT 12 [305] or custom) | ___ -M Auxiliary Foot Support (for 'P' Dim. 7 thru 18 [178 thru 457]) |
| ___ -CL Custom Length Standard Coupling with Integral Test Cap (Specify Length 4, 8, 10, 12 [102, 203, 254, 305]) | ___ -RYK17 One Piece Unistrut Pre-Fab Foot |
| ___ -CS 2-1/4 [57] Polymer Coupling with Integral Test Cap | ___ -VP Vandal-Proof Trim |
| ___ -F Floor Mounted, Back Outlet Fixture Support | ___ -X2 2 [51] Carrier Foot Extension Assembly |
| | ___ -X3 3 [76] Carrier Foot Extension Assembly |
| | ___ -45 Finishing Frame for Siphon Jet System |
| | ___ -50 Flush Valve Supply Support for Water Closets |

* Regularly furnished unless otherwise specified.

⚠ **WARNING:** Cancer and Reproductive Harm - www.P65Warnings.ca.gov

⚠ **ADVERTENCIA:** Cáncer y daño reproductivo - www.P65Warnings.ca.gov

⚠ **AVERTISSEMENT:** Cancer et effets néfastes sur la reproduction - www.P65Warnings.ca.gov

Zurn Industries, LLC | Specification Drainage Operation
1801 Pittsburgh Avenue, Erie, PA USA 16502, Ph. 855.663.9876

In Canada | Zurn Industries Limited
7900 Goreway Drive, Unit 10, Brampton, Ontario L6T 5W6, Ph. 877.892.5216

www.zurn.com

Rev. N
Date: 06/12/24
C.N. No. 146025
Patent zurn.com/patents
Prod. | Dwg. No. Z1201-N_4

Page 1 of 1



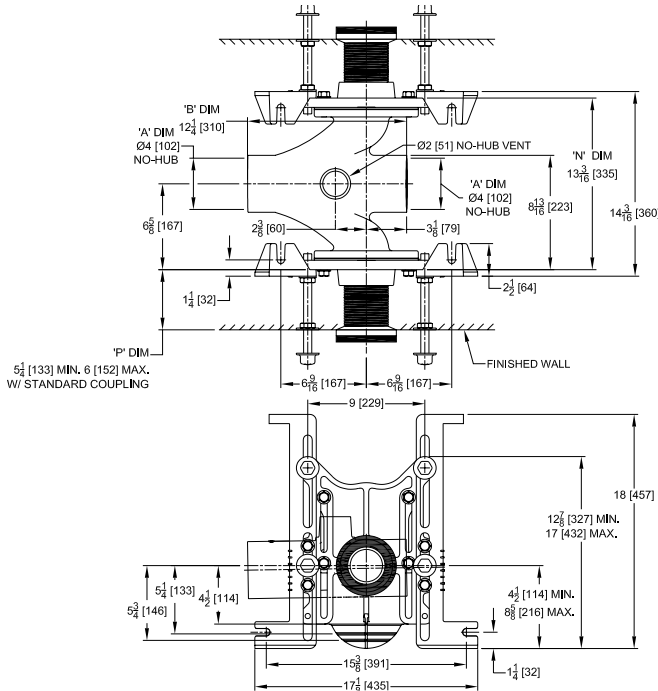
Z1201-ND4

EZCARRY® ADJUSTABLE HORIZONTAL HIGH PERFORMANCE
BACK-TO-BACK SIPHON JET NO-HUB WATER CLOSET CARRIER
SYSTEM

SPECIFICATION SHEET

TAG _____

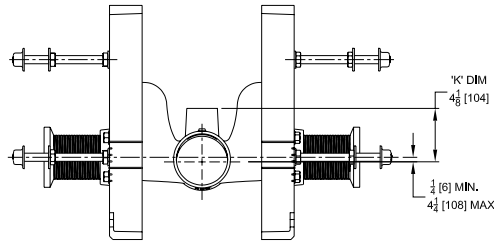
Design and Dimensional Data (inches and [mm]) are Subject to Manufacturing Tolerances and Change Without Notice



Product Number	Approx. Wt. lbs [kg]
Z1201-ND4	104 [47]

Note:

1. Z coupling, Min. 'P' Dim. Obtainable=2 [51].EZ-Set™ Coupling, Min. 'P' Dim. Obtainable=4-1/4 [108] or 2-1/16 [52] for 12 [305] NPT.
2. Feet bolted to floor using min. 1/2 [13] dia. anchors.



Z1201-ND4 Illustrated

ENGINEERING SPECIFICATION: ZURN Z1201-ND4

EZCarry® horizontal siphon jet water closet carrier system with high performance waterway and 4" [102mm] no-hub connections. System includes Dura-Coated cast iron double main fitting with hydro-mechanically optimized sweep and extended 2" [51mm] vent, adjustable faceplates, QuickFit™ faceplate gaskets, floor mounted pre-fab slotted foot supports with top anchoring pre-fab support base, fixture bolts, trim, stud protectors, bonded "Neo-Seal" gaskets, and corrosion resistant, adjustable 3" [76mm] dia. X 6" [152mm] couplings with integral test caps designed to increase flow velocity and line carry. EZCarry® system complies with the requirements of ASME A112.6.1M up to a 500 lbs [227 kg] static load rating.

OPTIONS (Check/specify appropriate options)

___ Z1201-ND4 4 [102] Hub Back-to-Back Inlet (Double)

PREFIXES

___ Z D.C.C.I. System with Zurn ZZ Adjustable Coupling*
___ ZQ D.C.C.I. System with NPT Faceplate, Non-Adjustable Coupling

SUFFIXES

___ -A Auxiliary Support Assembly (For 'P' Dim. Greater than 18 [457])	___ -G Galvanized Cast Iron
___ -CC Corrosion Resistant Cast Iron Coupling (2-1/4 [57] to 12 [305])	___ -M Auxiliary Foot Support (for 'P' Dim. 7 thru 18 [178 thru 457])
___ -CE EZ-Set™ Coupling (NPSM 6 [152] , 12 [305] or custom) (NPT 12 [305] or custom)	___ -RYK17 One Piece Unistrut Pre-Fab Foot Support
___ -CL Custom Length Standard Coupling with Integral Test Cap (Specify Length 4, 8, 10, 12 [102, 203, 254, 305])	___ -VP Vandal-Proof Trim
___ -CS 2-1/4 [57] Polymer Coupling with Integral Test Cap	___ -X2 2 [51] Carrier Foot Extension Assembly
___ -F Floor Mounted, Back Outlet Fixture Support	___ -X3 3 [76] Carrier Foot Extension Assembly
	___ -45 Finishing Frame for Siphon Jet System
	___ -50 Flush Valve Supply Support for Water Closets

* Regularly furnished unless otherwise specified.

⚠ **WARNING:** Cancer and Reproductive Harm - www.P65Warnings.ca.gov

⚠ **ADVERTENCIA:** Cáncer y daño reproductivo - www.P65Warnings.ca.gov

⚠ **AVERTISSEMENT:** Cancer et effets néfastes sur la reproduction - www.P65Warnings.ca.gov

Zurn Industries, LLC | Specification Drainage Operation
1801 Pittsburgh Avenue, Erie, PA 16502, Ph. 855.663.9876

In Canada | Zurn Industries Limited
7900 Goreway Drive, Unit 10, Brampton, Ontario L6T 5W6, Ph. 877.892.5216

www.zurn.com

Rev. P
Date: 06/04/2024
C.N. No. 146025
Patent zurn.com/patents
Prod. | Dwg. No. Z1201-ND4

Page 1 of 1



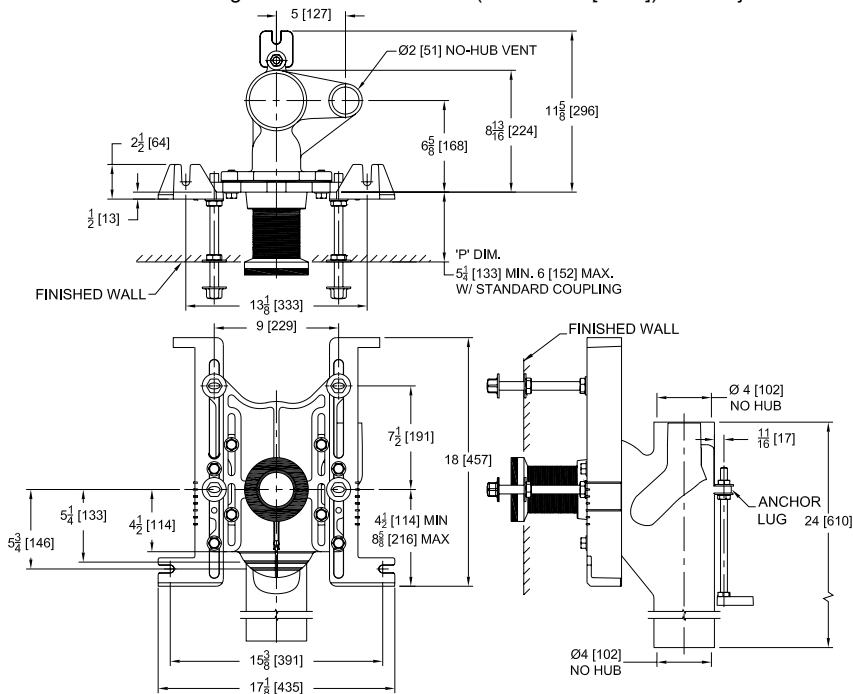
Z1202-N4

EZCARRY® ADJUSTABLE VERTICAL HIGH PERFORMANCE
SIPHON JET NO-HUB WATER CLOSET CARRIER SYSTEM

SPECIFICATION SHEET

TAG _____

Design and Dimensional Data (inches and [mm]) are Subject to Manufacturing Tolerances and Change Without Notice



Product Number	Approx. Wt. lbs [kg]
Z1202-N4	73 [33]

Note:

1. Z Coupling, Min. 'P' Dim. Obtainable = 2 [51]. EZ-Set™ Coupling, Min. 'P' Dim. Obtainable = 4-1/4 [108] or 2-1/16 [52] for 12 [305] NPT
2. Feet bolted to floor using min. 1/2 [13] dia. anchors.
3. Rear anchor foot assembly required for secure installation.
4. 2 [51] No-Hub vent connection regularly furnished on right hand side. Left hand available when specified (Suffix -VL)
5. Auxiliary inlet available right (-JR) or left (-JL) or both sides (-JJ) when specified.

ENGINEERING SPECIFICATION: ZURN Z1202-N4

EZCarry® vertical siphon jet water closet carrier system with high performance waterway and 4" [102mm] no-hub connections. System includes Dura-Coated cast iron main fitting with hydro-mechanically optimized sweep and extended 2" [51mm] vent, adjustable faceplate, QuickFit™ faceplate gasket, floor mounted pre-fab slotted foot supports with top anchoring pre-fab support base, heavy-duty 1/2" [13mm] rear anchor tie down, fixture bolts, trim, stud protectors, bonded "Neo-Seal" gasket, and corrosion resistant, adjustable 3" [76mm] dia. X 6" [152mm] coupling with integral test cap designed to increase flow velocity and line carry. EZCarry® system complies with the requirements of ASME A112.6.1M up to a 500 lbs [227 kg] static load rating.

OPTIONS (Check/specify appropriate options)

____ Z1202-N4 4 [102] No-Hub Stack, Single Inlet, 2 [51] Right Hand Vent

PREFIXES

____ Z D.C.C.I. System with Zurn ZZ Adjustable Coupling*
____ ZQ D.C.C.I. System with NPT Faceplate, Non-Adjustable Coupling

SUFFIXES

____ -A	Auxiliary Support Assembly (For 'P' Dim. Greater than 18 [457])	____ -JL	2 [51] Left-Hand Auxiliary Inlet
____ -CC	Corrosion Resistant Cast Iron Coupling (2-1/4 [57] to 12 [305])	____ -JR	2 [51] Right-Hand Auxiliary Inlet
____ -CE	EZ-Set™ Coupling (NPSM 6 [152], 12 [305] or custom) (NPT 12 [305] or custom)	____ -M	Auxiliary Foot Support (for 'P' Dim. 7 thru 18 [178 thru 457])
____ -CL	Custom Length Standard Coupling with Integral Test Cap (Specify Length 4, 8, 10, 12 [102, 203, 254, 305])	____ -RYK17	One Piece Unistrut Pre-Fab Foot
____ -CS	2-1/4 [57] Polymer Coupling with Integral Test Cap	____ -VL	Left Hand Vent Connection
____ -F	Mounted, Back Outlet Fixture Support	____ -VP	Vandal-Proof Trim
____ -G	Galvanized Cast Iron	____ -X2	2 [51] Carrier Foot Extension Assembly
____ -JJ	Two 2 [51] Auxiliary Inlets	____ -X3	3 [76] Carrier Foot Extension Assembly
		____ -45	Finishing Frame for Siphon Jet Water System
		____ -50	Flush Valve Supply Support for Water Closets

* Regularly furnished unless otherwise specified.

⚠ **WARNING:** Cancer and Reproductive Harm - www.P65Warnings.ca.gov

⚠ **ADVERTENCIA:** Cáncer y daño reproductivo - www.P65Warnings.ca.gov

⚠ **AVERTISSEMENT:** Cancer et effets néfastes sur la reproduction - www.P65Warnings.ca.gov

Zurn Industries, LLC | Specification Drainage Operation
1801 Pittsburgh Avenue, Erie, PA 16502, Ph. 855.663.9876

In Canada | Zurn Industries Limited
7900 Goreway Drive, Unit 10, Brampton, Ontario L6T 5W6, Ph. 877.892.5216

www.zurn.com

Rev. N
Date: 07/23/24
C.N. No. 146183
Patent zurn.com/patents
Prod. | Dwg. No. Z1202-N4

Page 1 of 1



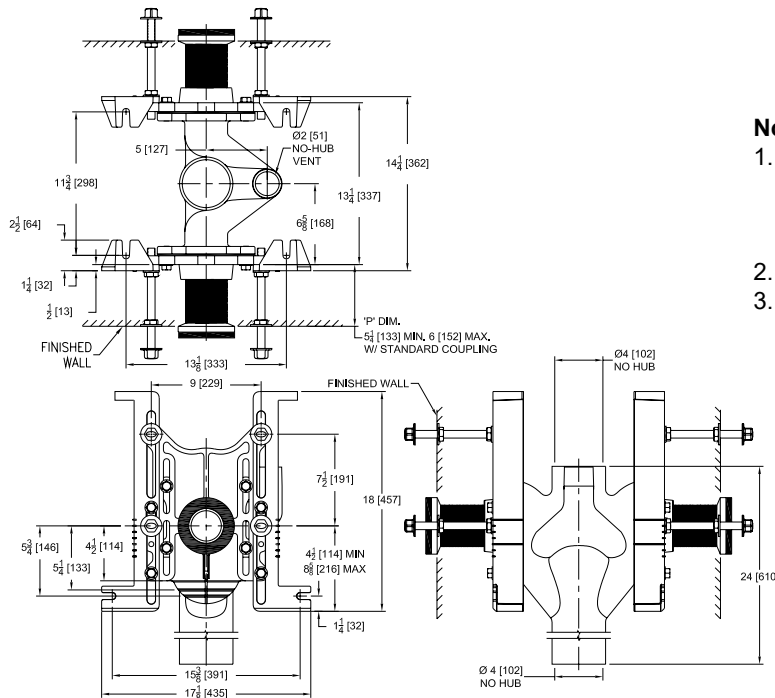
Z1202-ND4

EZCARRY® ADJUSTABLE VERTICAL BACK-TO-BACK
HIGH PERFORMANCE SIPHON JET NO-HUB WATER
CLOSET CARRIER SYSTEM

SPECIFICATION SHEET

TAG _____

Design and Dimensional Data (inches and [mm]) are Subject to Manufacturing Tolerances and Change Without Notice



Product Number	Approx. Wt. lbs [kg]
Z1202-ND4	119 [54]

Note:

1. Z Coupling, Min. 'P' Dim. Obtainable = 2 [51].
EZ-Set™ Coupling, Min. 'P' Dim. Obtainable = 4-1/4 [108] or 2-1/16 [52] for 12 [305] NPT
2. Feet bolted to floor using min. 1/2 [13] dia. anchors.
3. Auxiliary inlet available right (-JR) or left (-JL) or both sides (-JJ) when specified.

ENGINEERING SPECIFICATION: ZURN Z1202-ND4

EZCarry® vertical siphon jet water closet carrier system with high performance waterway and 4" [102mm] no-hub connections. System includes Dura-Coated cast iron double main fitting with hydro-mechanically optimized sweep and extended 2" [51mm] vent, adjustable faceplates, QuickFit™ faceplate gaskets, floor mounted pre-fab slotted foot supports with top anchoring pre-fab support base, fixture bolts, trim, stud protectors, bonded "Neo-Seal" gaskets, and corrosion resistant, adjustable 3" [76mm] dia. X 6" [152mm] couplings with integral test caps designed to increase flow velocity and line carry. EZCarry® system complies with the requirements of ASME A112.6.1M up to a 500 lbs [227 kg] static load rating.

OPTIONS (Check/specify appropriate options)

____ Z1202-ND4 4 [102] No-Hub Stack, Double Inlets, 2 [51] Vent

PREFIXES

____ Z D.C.C.I. System with Zurn ZZ Adjustable Coupling*
____ ZQ D.C.C.I. System with NPT Faceplate, Non-Adjustable Coupling

SUFFIXES

____ -A	Auxiliary Support Assembly (For 'P' Dim. Greater than 18 [457])	____ -JJ	Two 2 [51] Auxiliary Inlets
____ -CC	Corrosion Resistant Cast Iron Coupling (2-1/4 [57] to 12 [305])	____ -JL	2 [51] Left-Hand Auxiliary Inlet
____ -CE	EZ-Set™ Coupling (NPSM 6 [152], 12 [305] or custom) (NPT 12 [305] or custom)	____ -JR	2 [51] Right-Hand Auxiliary Inlet
____ -CL	Custom Length Standard Coupling with Integral Test Cap (Specify Length 4, 8, 10, 12 [102, 203, 254, 305])	____ -M	Auxiliary Foot Support (for 'P' Dim. 7 thru 18 [178 thru 457])
____ -CS	2-1/4 [57] Polymer Coupling with Integral Test Cap (ZZ Coupling Only)	____ -RYK17	One Piece Unistrut Pre-Fab Foot
____ -F	Mounted, Back Outlet Fixture Support	____ -VP	Vandal-Proof Trim
____ -G	Galvanized Cast Iron	____ -X2	2 [51] Carrier Foot Extension Assembly
		____ -X3	3 [76] Carrier Foot Extension Assembly
		____ -45	Finishing Frame for Siphon Jet Water System
		____ -50	Flush Valve Supply Support for Water Closets

* Regularly furnished unless otherwise specified.

⚠ **WARNING:** Cancer and Reproductive Harm - www.P65Warnings.ca.gov

⚠ **ADVERTENCIA:** Cáncer y daño reproductivo - www.P65Warnings.ca.gov

⚠ **AVERTISSEMENT:** Cancer et effets néfastes sur la reproduction - www.P65Warnings.ca.gov

Zurn Industries, LLC | Specification Drainage Operation
1801 Pittsburgh Avenue, Erie, PA 16502, Ph. 855.663.9876

In Canada | Zurn Industries Limited
7900 Goreway Drive, Unit 10, Brampton, Ontario L6T 5W6, Ph. 877.892.5216

www.zurn.com

Rev. M
Date: 07/23/24
C.N. No. 146183
Patent zurn.com/patents
Prod. | Dwg. No. Z1202-ND4

Page 1 of 1